



OMAN CONVENTION
& EXHIBITION CENTRE
مركز عُمان للمؤتمرات والمعارض

OCEC AV Guide

2020/21



OMRAN

النمو عبر السياحة
GROWTH THROUGH TOURISM

بثقة
Moving Forward
with Confidence

رؤية عمان 2040
Oman Vision 2040

www.cec.com

[f](#) [@](#) [v](#) [y](#) [in](#) OmanConvention

WELCOME to OCEC

Oman Convention & Exhibition Centre is a multifaceted convention venue that offers flexible and accommodating spaces to suit all sizes of events. Our role is to partner with you to leverage the OCEC facilities and services in achieving a seamless event experience.

The AV Guide serves as a resource and is intended to assist all event stakeholders in planning and achieving successful events to remember. It contains important information about the available OCEC event equipment .

Further information about OCEC event facilities, services and operations, please refer to your OCEC Event Planning contact.

Content

04

Sound

30

Lighting

49

Rigging

62

Video

Sound



Overview

We are committed to enhancing the sound experience by providing customized audio solutions. The OCEC portfolio includes large and medium format live array systems as well as a range of low-profile powered loudspeakers for discreet sound reinforcement.

Our digital mixing consoles range from 16 to 96 channels and all include outboard digital Signal Processing and state of the art effects. We also utilize top of the range audio networking for real-time processing solutions for conferencing, broadcast, and live entertainment production.

Loudspeakers & PA Systems

D&B V-Series Line Array Loudspeaker with flyable V-SUBs

- ✦ The 3-way passive V8 and V12 line array loudspeakers provide 80° and 120° horizontal dispersion respectively maintained down to 250 Hz.
- ✦ The Cardioid V-SUB provides an impressive rejection of energy towards the rear of the cabinet.

Description	V8	V12	V-SUB
Components	2 x 10" 1 x 8" 2 x 1.4"	2 x 10" 1 x 8" 2 x 1.4"	1 x 18" 1 x 12"
Dispersion	80°	120°	Cardioid
Frequency response	67Hz – 18KHz	67Hz – 18KHz	37 – 115Hz
SPLmax	142 dB	142 dB	137 dB
Weight	34 kg	34 kg	64 kg
Dimensions	310 x 700 x 460 mm	310 x 700 x 460 mm	606 x 700 x 728 mm



Loudspeakers & PA Systems

D&b Y Series Point source loudspeakers with B6 SUBs

- ✪ Y7P point source loudspeakers offers horizontal dispersion angle of 75° horizontal directivity control down to 500 Hz with two 8" low frequency drivers and a 1.4" compression driver.

Description	Y7P	B6
Components	2 x 8" 1 x 1.4"	18"
Dispersion	75° x 40°	Omni directional
Frequency Response	59Hz – 18KHz	37 – 140 Hz
SPLmax	137 dB	134 dB
Weight	18 kg	41 kg
Dimensions	580 x 257 x 341 mm	490 x 580 x 700 mm



Loudspeakers & PA Systems

JBL VerTec VT4888 Line Array Loudspeakers with VT4880 Subwoofers

Description	VT4888	VT4880
Components	2 x 12 " 4 x 5.5" 2 x 3"	2 x 18"
Dispersion	90° Horizontal	Inversely proportional to product of array length
Frequency Response	60Hz – 16 KHz	29 – 120Hz
SPLmax	136 dB	137 dB
Weight	51 kg	71 kg
Dimensions	990.6 x 355.6 x 508 mm	1229 x 493 x 860 mm



Loudspeakers & PA Systems

JBL VRX 932 Line Array Loudspeakers with VRX 918 Subwoofers

Description	VRX932LA-1	VRX918S
Components	1 x 12" 3 x 1.5"	1 x 18"
Frequency Response	57Hz – 20KHz	31 – 220Hz
SPLmax	130 dB	n/a
Weight	21 kg	37 kg
Dimensions	343 x 597 x 376 mm	508 x 597 x 749 mm



Loudspeakers & PA Systems

D&b M6 Stage Wedge Monitors

Description

M6

Components

12"/1.3"

Dispersion

50° x 80° rotatable

Frequency Response

65 Hz - 17 kHz

SPLmax

138 dB

Weight

16 kg

Dimensions

332 x 486 x 455 mm



Loudspeakers & PA Systems

D&b MAX2 Stage Wedge Monitors

Description

MAX2

Components

15"/1.4"

Dispersion

75°

Frequency Response

55 Hz - 20 kHz

SPLmax

135 dB

Weight

23 kg

Dimensions

354 x 580 x 496 mm



Loudspeakers & PA Systems

D&b E8 Low Profile Loudspeakers

Description

E8

Components

8"/1"

Dispersion

90° x 50° rotatable

Frequency Response

62 Hz - 18 kHz

SPLmax

129 dB

Weight

7.3 kg

Dimensions

390 x 232 x 223 mm



Loudspeakers & PA Systems

JBL SRX 812P Powered Loudspeakers

Description

SRX812P

Components

12"/3"

Dispersion

90° x 50°

Frequency Response

48 Hz - 20 kHz

SPLmax

136 dB

Weight

26.4 kg

Dimensions

429 x 415 x 638mm



Loudspeakers & PA Systems

JBL EON 610 Powered Loudspeakers

Description

EON610

Components

10"/1"

Dispersion

110° x 60°

Frequency Response

60Hz – 20kHz

SPLmax

124 dB

Weight

11.79 kg

Dimensions

558 x 322 x 295 mm



Amplification & DSP

D&b D80 Amplification

Description

D80

Max output power

4 x 2000 W into 8 ohms

4 x 4000 W into 4 ohms

Output channels

4

THD

THD+N < 0.5%

Output mode

Dual Channel, Mix TOP/SUB

2-Way Active

Sampling rate

96 kHz / 27 Bit ADC / 24 Bit DAC



Amplification & DSP

Crown I-Tech HD 4x3500 Amplification

Description

I-Tech HD 4 x 3500

Max output power

2100 W into 8 ohms

4000 W into 4 ohms

THD

0.35%

Output channels

4



Digital Audio Consoles

Soundcraft Vi7000

Features

- ✧ 44 faders
- ✧ Up to 128 inputs and 32 mono/stereo busses
- ✧ 8 independent Lexicon multi-FX units, BSS DPR901ii™ integration and a BSS graphic EQ on every bus output.
- ✧ MIDI, USB, Ethernet, DVI out, Dante/MADI record feed outputs, redundant power supply and other connections.



Digital Audio Consoles

Soundcraft Vi3000

Features

- ✧ 36 faders
- ✧ 24 mono/stereo busses
- ✧ 8 independent Lexicon multi-FX units, BSS DPR901ii™ integration and a BSS graphic EQ on every bus output.
- ✧ MIDI, USB, Ethernet, DVI out, Dante/MADI record feed outputs, redundant power supply and other connections.



Digital Audio Consoles

Soundcraft Vi6

Features

- ✧ 32 input faders plus 12-fader master section
- ✧ 96 mono inputs into 35 Outputs. Pairs of mono inputs can be linked to create stereo channels.
- ✧ 24 insert send/return pairs can be configured (using available I/O) and assigned to any of the 96 inputs or 35 output channels.
- ✧ 32 Grp/Aux/Matrix, plus main LCR Mix and LR Solo busses



Digital Audio Consoles

Soundcraft Si Performer

Features

- ✧ 32 mono mic inputs and 8 line inputs
- ✧ 20 sub-group / aux busses
- ✧ 4 FX busses



Digital Audio Consoles

Soundcraft Si Expression

Features

- ✧ 16 mono mic inputs and 4 line inputs
- ✧ 20 sub-group / aux busses
- ✧ 4 FX busses



Wireless Systems

Shure AXT400 Wireless Microphone System

Features

- ✦ Expansive tuning bandwidth of up to 228 MHz—equal to 4 transmitter bands.
- ✦ Interference Detection & Avoidance automatically detects interference and moves signal to a clear, compatible channel in a fraction of a second.
- ✦ Ensures seamless, uninterrupted audio for mission-critical transmitters in extreme RF settings.



Wireless Systems

Shure QLXD Wireless Microphone System

Features

- ✦ Digital wireless receiver combines professional features with streamlined set-up and operation. Features include Automatic Channel scan, Networked Channel Scan, digital predictive switching, and AES 256 encryption for security.



Wireless Systems

Shure PSM1000 Wireless In-Ear System

Features

- ✪ Networkable, full-rack, dual-channel wireless transmitter used in conjunction with the P10R Wireless Bodypack Receiver as part of the PSM® 1000 Personal Monitor System.
- ✪ 72 MHz to 80 MHz tuning bandwidth, networked remote control via Wireless Workbench® software.



Wireless Systems

Sennheiser 2000 Wireless System

Features

- ✧ Up to 75 MHz switching bandwidth.
- ✧ 20 fixed frequency bands with up to 64 compatible presets.
- ✧ Frequency setting in 25 kHz steps.



Microphones

We offer a large selection of microphones fitted to the size and type of events. Our inventory includes but is not limited to the following:

- ✧ Lectern microphones
- ✧ Handheld dynamic and condenser microphones
- ✧ Lavalier microphones
- ✧ Headset microphones
- ✧ Assorted large and small diaphragm instrument microphones
- ✧ Shotgun microphones
- ✧ Multi-pattern condenser microphones

beyerdynamic

SHURE
LEGENDARY
PERFORMANCE™

COUNTRYMAN
ASSOCIATES, INC.

DPA
MICROPHONES

AKG
by HARMAN



Recording & Playback

Amongst our large and varied stock, we have equipment to suit every type of event for use in playback, recording, postproduction and signal distribution.



Event Communication

Clear-com HME DX210 Wireless Intercom

The system enables up to four synchronized co-located base stations to be used together for a total of 44 user devices with up to 16 in hands-free, full-duplex mode. Wired intercom input/output interfaces make DX210 compatible with existing 2-wire partyline or 4-wire matrix systems provided by Clear-Com or RTS.



Event Communication

Clear-com FreeSpeak II Digital Wireless intercom

FreeSpeak II is a five-channel, full-duplex wireless intercom solution, ideal for large-scale, complex designs or specialized applications—requiring team members to be untethered and talking in independent channels of communication.

After years of field experience and refinement, FreeSpeak II has become the de facto standard for wireless intercom operation in the 1.9GHz and 2.4GHz band across various markets. The exceptional RF performance and reliable connections across the system give users the peace of mind they need for staying connected at every major event, programming, stage performance, critical or mass area operation.



Lighting



Overview

All of OCEC's lighting fixtures are from world leaders in LED lighting technology with energy efficiency and quality at heart, which provide great flexibility when designing lighting installations. The latest in lighting console technology also allows us to leverage the building's infrastructure in providing unparalleled lighting solutions.

Fixtures

ARRI L10-C – LED Fresnel

Description

LED Focusable Fresnel

Angle

15 to 50 degree half Peak Angle

Colour

Full RGB+W

Colour Temperature

2,800k to 10,000k white light

Dimensions H x W x D

714 x 502 x 560 (mm)

Weight

20 (kg)



Fixtures

ARRI L7-C – LED Fresnel

Description

LED Focusable Fresnel

Angle

15 to 50 degree half Peak Angle

Colour

Full RGB+W

Colour Temperature

2,800k to 10,000k white light

Brightness

Equivalent brightness to 1000w, 150w consumption

Weight

9 (kg)



Fixtures

ARRI S30 – C LED Flood

Description

Full Colour LED Flood

Angle

115 degree (HPA)

Colour

Full RGB+W

Colour Temperature

2,800k to 10,000k white light

Dimensions H x W x D

499 x 507 x 133 (mm)

Weight

9 (kg) including PSU



Fixtures

ETC Source 4 Series 2 Lustr LED Profile

Description

LED Profile

Lens Range

10°, 19°, 26°, 36° Along with 25/50 and 15/30 Zoom

Angle

115 degree (HPA)

Colour

7 Colour LED Profile

Dimensions H x W x D

631 x 434 x 338 (mm)

Weight

8.3 (kg) approx



Fixtures

Chroma Q Color Force II 12

Description

Cyc, Wash and Effects LED Batten

Angle

22 degree BA

Colour

4 x RGBA LED

Dimensions H x W x D

335 x 190 x 218 (mm)

Weight

5 (kg)



Fixtures

Chroma Q Color Force II 72

Description

Cyc, Wash and Effects LED Batten

Angle

22 degree BA

Colour

24 x RGBA LED

Dimensions H x W x D

1759 x 165 x 191 (mm)

Weight

24 (kg)



Fixtures

Chauvet Color Dash Accent Quad

Description

Low profile quad colour accent light

Angle

15 degree BA

Colour

1 x RGBA LED

Dimensions H x W x D

110 x 67 x 172 (mm)

Weight

0.8 (kg)



Fixtures

Robe LiteWare HO2 Portable Battery Powered Uplighter

Description

LiteWare RGBW Battery Uplighter with Wireless DMX

Angle

22 – 50 degree adjustable Beam angle

Colour

2 x 40w RGBW LED

Dimensions H x W x D

353 x 182 x 179 (mm)

Weight

15 (kg)



Fixtures

Robe LiteWare Satellite 2 Portable Battery Powered Uplighter

Description

Optional adjustable 1.7m to 2.6m pole

Angle

22 – 55 degree Beam angle

Colour

2 x 40w RGBW LED on tilting head



Fixtures

Clay Paky Glow Up C RGBW

Description

Battery or mains powered uplighter
Wired or wireless DMX or standalone feature

Angle

15/30 degree manually adjustable beam

Colour

1 x RGBA LED

Dimensions H x W x D

365 x 226 x 226 (mm)

Weight

7.5 (kg) , IP65



Fixtures

Prolights Smart Bat Led Uplighter

Description

Battery powered
W-DMX Wireless Control

8 – 12 hour life on full charge
4 hour recharge

Angle

20-degree tilt angle adjustable

Colour

4 x 12w LED



Fixtures

Studio Due – City Color RGBW LED Flood

Description

3 DMX modes (4,5,9 channels)

Output 560w

IP64 Rating

Colour

120 RGB w 16w LED

Dimensions

365 x 145 x 640 (mm)

Weight

32 (kg)



Fixtures

Follow Spots – Robert Juliat Oz/ Alice LED Follow Spots

Description

One hand dim, pan and tilt
DMX or local controllable
RDM compatible
Colour changer

Colour

600w LED – Cool White

Angle

Long throw 7 deg to 14.5 deg or Medium throw 13 deg to 24 deg



Intelligent Lighting

Variolite 2600 Profile

Description

Lower power consumption – approx. 550W
19,000 lumens output
Four blade framing Iris
Rotating and fixed wheel gobo wheels
1 x 3 facet prism
Variable frost

Angle

7deg to 48deg zoom range

Colour

CMY and CTO color mixing

Dimensions

464 x 300 x 715 (mm)

Weight

32 (kg)



Intelligent Lighting

Varilite 2600 Wash

Description

Lower power consumption – approx.
820W (550W LED engine) 22,000 lumens output

Adjustable beam edge – PC to Fresnel
Beam-shaping framing system

Angle

12 to 63 zoom range

Colour

CMY and CTO color mixing, and 7 fixed color wheel

Dimensions

465 x 300 x 705 (mm)

Weight

30 (kg) approx



Intelligent Lighting

Chauvet R1 Wash

Description

4 DMX modes 14,15,19,21 channels

Power 139 w / 0.62A

2300 Lumens output

11 deg to 48 deg zoom

Angle

8 deg to 30deg beam angle

Colour

7 x RGB & W 15w LED

Dimensions

187 x 265 x 354 (mm)

Weight

6 (kg)



Intelligent Lighting

Chauvet R1X Spot

Description

2 modes (16, 19 DMX Channels)
2 x gobo wheels (Wheel 1 Rotating)

Iris

3 Facets prism

Angle

Beam Angle: 14°

Colour

8 + white colour wheel (1 x 170w LED)

Dimensions

282 x 360 x 447 (mm)

Weight

16.3 (kg)



Rigging



Overview

Our Rigging team is equipped with a comprehensive stock of lifting and staging equipment, enabling provision of flexible, bespoke rigging and staging solutions tailored to suit a wide range of event formats.

Control systems are network capable, with no limit to the number of simultaneously controlled hoists. Control can be integrated with common media-server systems, enabling extremely dynamic visual effects.

Prolyte Aetos double - brake chain hoists

Description

- ✧ 1000kg D8 rated, 500kg D8+
- ✧ Incremental Encoder
- ✧ 4 m/min chain speed



Kinesys Digihoist Controllers

Description

- ✧ 8 – channel direct control
- ✧ Stackable, self-addressing
- ✧ Controllable via Vector Software, using encoders



Track systems

Description

- ✧ A selection of Modular Tracking solutions
- ✧ Up to 600kg max capacity trolleys
- ✧ Various drive solutions, including Kinesys Elevation drive control, via Vector software



LibraCell Load-cells

Description

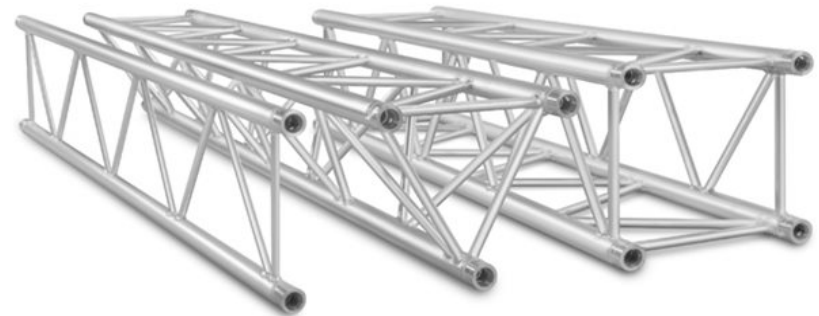
- ✧ Load cell shackle, SWL 3.25t
- ✧ Compatible with both Digihoist and Vector systems
- ✧ Also usable standalone



Milos M290 Aluminium Trussing

Description

- ✧ 30 cm x 30 cm Size
- ✧ 6-way corner cubes, 0.5m, 1m, 2m, 3m sections
- ✧ 3mm wall, allowing high load capacity



Lifting Tackle

Description

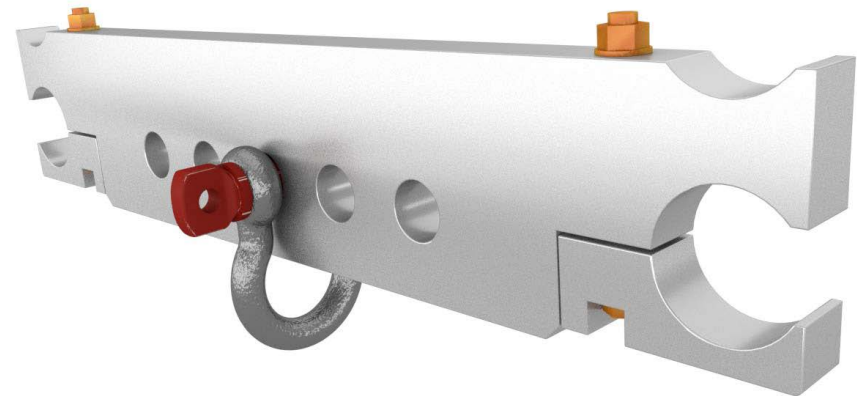
- ✪ Our stock of Lifting tackle is extensive, allowing for extremely flexible rigging solutions. Inclusive with hire of chain-hoists and trussing.



Rigging Points

Description

- ✱ Across Exhibition Halls, Ballrooms and Theatres we are equipped to provide points for rigging chain-hoists, or dead hung trussing and other rigged elements



Lycra Sails

Our Sails can provide an especially unique look and feel to your event. They can be easily rigged in almost any venue, and in almost any configuration. They are also white, providing a perfect surface for lighting.

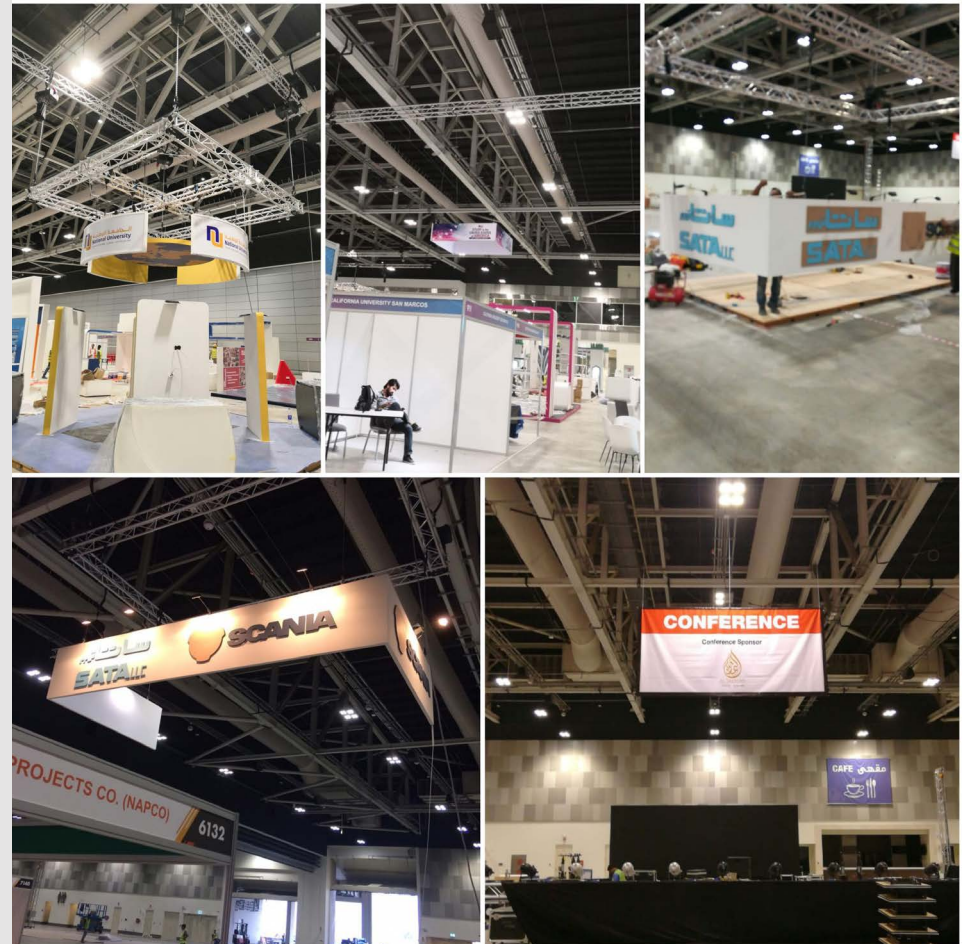
- ✧ Square – 1m x 1m, 2m x 2m, 4m x 4m, 6m x 6m
- ✧ Rectangle – 2m x 1m, 4m x 2m, 6m x 4m
- ✧ Triangle – 2m x 1m, 4m x 2m, 6m x 3m



Banner Rigging

Description

- ✪ Low-load Banners can be rigged almost anywhere across the exhibition halls and ballrooms. Small gauge steel wire drops, to give a discreet, sleek aesthetic.



Drape

Description

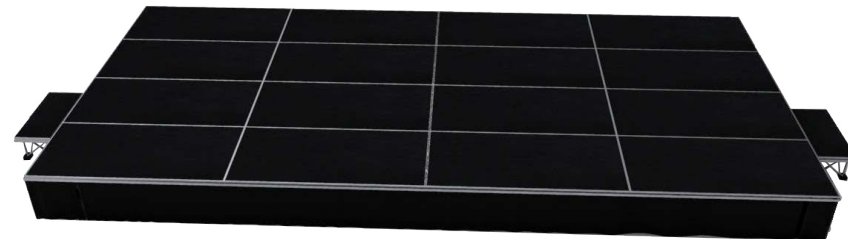
- ✪ Black wool serge, and white Moulton. 10m drop, with door drapes to 8m. Generally used in the exhibition halls, but solutions can be provided for other spaces.



Staging

Description

- ✪ Euro truss Modular Staging system, with steps, handrails and soft velour valance. Heights in 150mm steps from 100mm to 1450mm. Brushed aluminum frame, and matt black non-slip surface.



Video



PROJECTLX

PROJECTLX



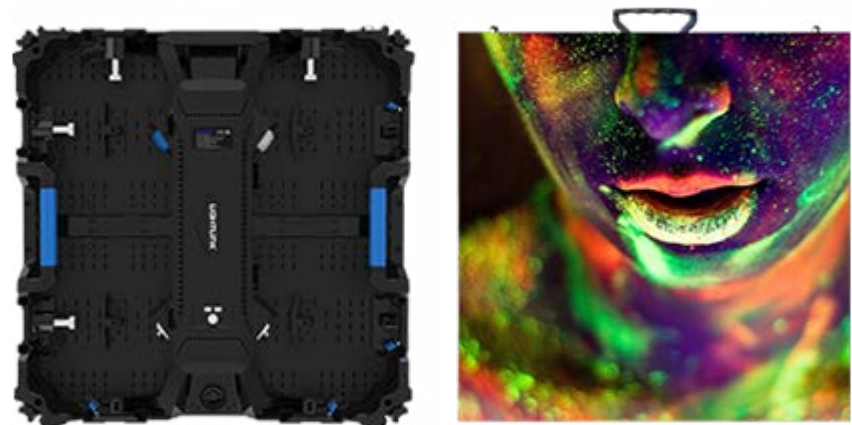
Overview

Our Video team has the experience to provide small Laptop driven production right through to media server multi display projects and projection mapping.

LightLink LED Wall

Description

- ✧ 2.6mm pitch
- ✧ Max 1300 Nits
- ✧ Can be built floor standing, or flown from Rigging
- ✧ Can be built flat, or curved (concave)
- ✧ Novastar VX6S Processors



Christie Boxer Series Projectors

Description

- ✧ 30,000 Lumen output
- ✧ 2K Resolution
- ✧ Selection of screen sizes, both rear and front projection



Christie GS Series Projectors

Description

- ✱ 6000 Lumen output
- ✱ HD Resolution
- ✱ Selection of screen sizes, both rear and front projection



LCD TVs

Description

- ✪ Range of sizes, 43" up to 65"
- ✪ Can be provided with table-top stand, or Parabola stand



AMX Switchers

Description

- Up to 8-way seamless switching
- Preview capability



Corio Master Mini Display Manager

Description

- ✧ 10 Input, 4 Output
- ✧ Versatile display management, providing a cost-effective solution for medium-scale events with multiple media inputs, and multiple displays.
- ✧ Able to provide basic effects, e.g. PIP/ basic transitions.



Watchout Media Servers

Description

- ✿ Scalable Media server system, able to manage up to 8 Displays simultaneously.
- ✿ Provides an extremely versatile, in-depth solution for control of media and displays.
- ✿ Allows precise management of event timelines and a comprehensive suite of effects and display options.



High Quality Cameras

Description

- ✧ 4K Resolution
- ✧ Versatile connectivity; HDSDI, HDMI, Fiber



Media Distribution

We stock a wide range of cabling, scalers and media converters. These provide a range of options to provide signal paths both within and between venues. The center has an extensive fiber backbone, allowing high-bitrate transmission of media across the whole site.





OMAN CONVENTION
& EXHIBITION CENTRE
مركز عُمان للمؤتمرات والمعارض

Where The World Meets

2020/21